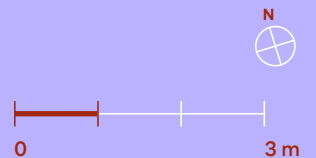
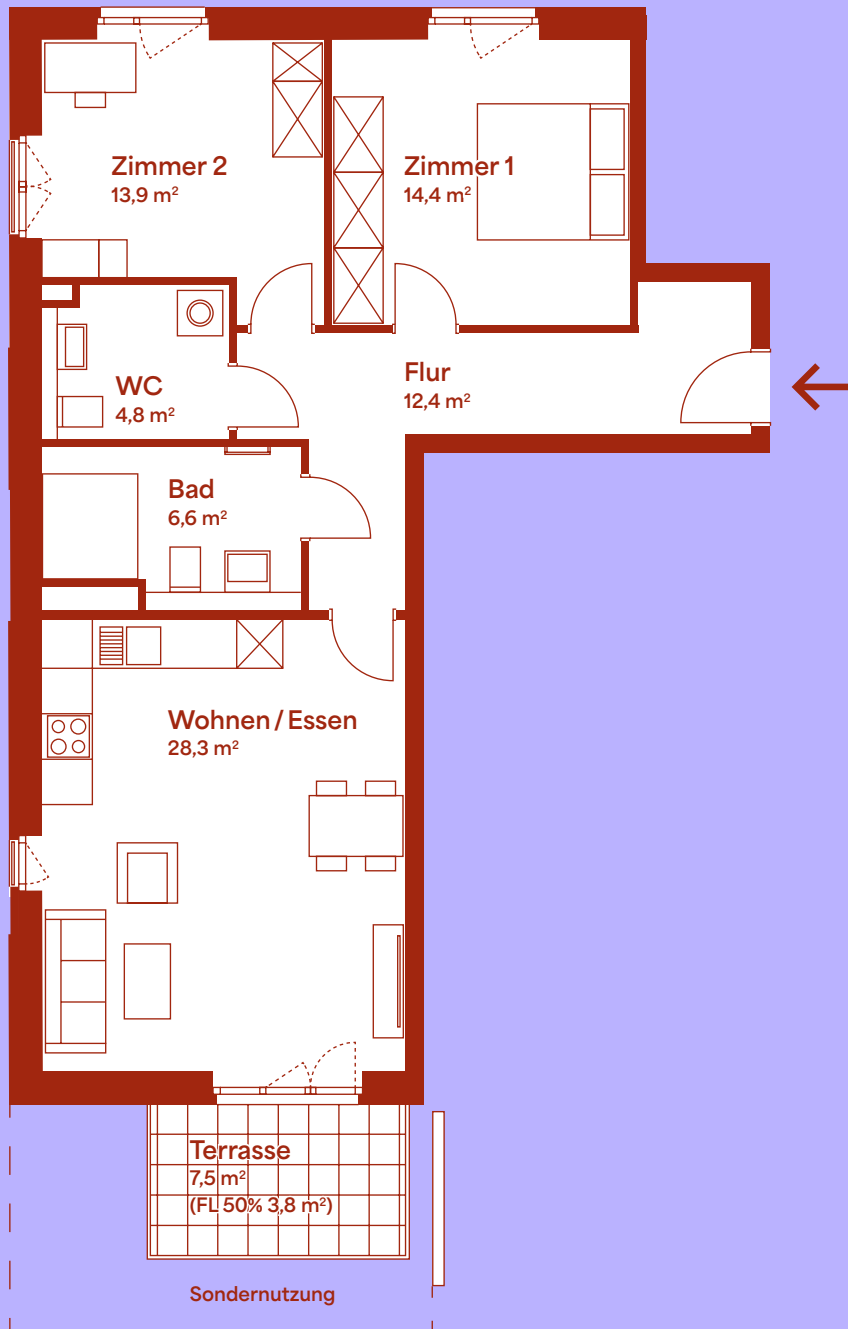


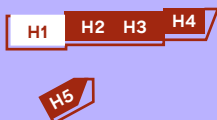
# Wohneinheit 4

Erdgeschoss | Haus 1 | 3 Zimmer

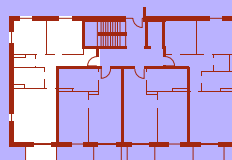
ROTEN  
BLEICHER



LAGEPLAN



ERDGESCHOSS



ANSICHT WEST



Zimmer 1	14,4 m <sup>2</sup>
Zimmer 2	13,9 m <sup>2</sup>
WC	4,8 m <sup>2</sup>
Flur	12,4 m <sup>2</sup>
Bad	6,6 m <sup>2</sup>
Wohnen / Essen	28,3 m <sup>2</sup>
Terrasse (50%)	3,8 m <sup>2</sup>
<b>Grundfläche ca.</b>	<b>84,2 m<sup>2</sup></b>